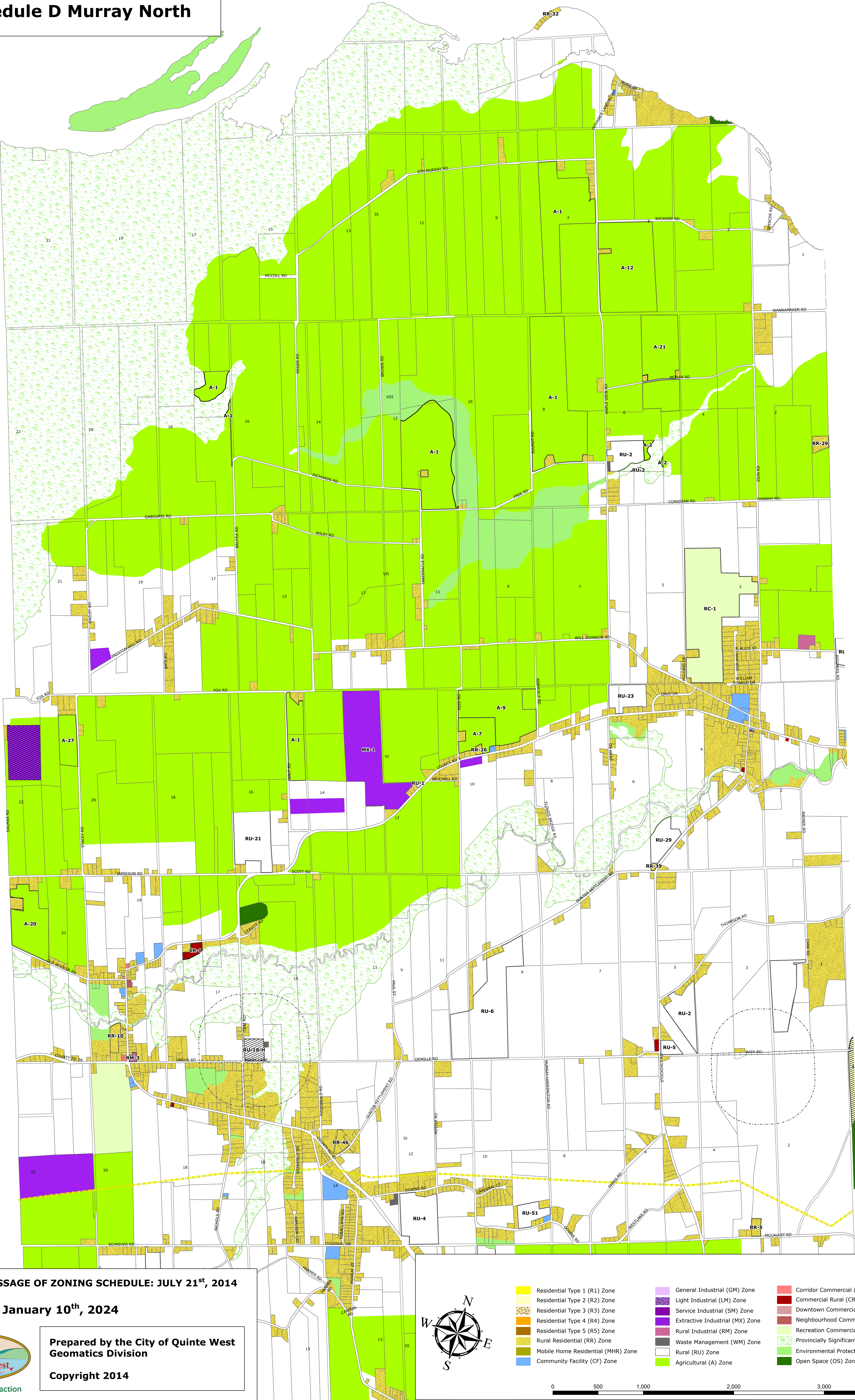


Schedule D Murray North



Refer to Schedule F Sidney North

Refer to Schedule C Frankford/Batawa

Note: Redistribution in both digital and printed form is prohibited. The creation of derivative products based on this work is forbidden without the written permission of the City of Quinte West. Printed copies of this map can be obtained directly from the City of Quinte West.

In no event will the City of Quinte West be liable for any indirect, exemplary, incidental or consequential damages arising out of or otherwise relating to the use of this information. This includes, but is not limited to, loss of data, business interruption, loss of profits, or other economic loss, even if the City of Quinte West has been advised of the possibility of such damages.

Document is only current to the date listed.

DATE OF PASSAGE OF ZONING SCHEDULE: JULY 21st, 2014

UPDATED: January 10th, 2024

**Prepared by the City of Quinte West
Geomatics Division**

Copyright 2014



- | | | | |
|--|--|---|--|
| <ul style="list-style-type: none">Residential Type 1 (R1) ZoneResidential Type 2 (R2) ZoneResidential Type 3 (R3) ZoneResidential Type 4 (R4) ZoneResidential Type 5 (R5) ZoneRural Residential (RR) ZoneMobile Home Residential (MHR) ZoneCommunity Facility (CF) Zone | <ul style="list-style-type: none">General Industrial (GM) ZoneLight Industrial (LM) ZoneService Industrial (SM) ZoneExtractive Industrial (MX) ZoneRural Industrial (RM) ZoneWaste Management (WM) ZoneRural (RU) ZoneAgricultural (A) Zone | <ul style="list-style-type: none">Corridor Commercial (CC) ZoneCommercial Rural (CR) ZoneDowntown Commercial (DC) ZoneNeighbourhood Commercial (NC) ZoneRecreation Commercial (RC) ZoneProvincially Significant Wetland (PSW) ZoneEnvironmental Protection (EP) ZoneOpen Space (OS) Zone | <ul style="list-style-type: none">Development (D) ZoneHolding (-H) ZoneException to Parent ZoneEnvironmentally Sensitive Areas (ESA) ZoneMethadone Holding (-MH) ZoneSource Water Protection (SWP) ZoneParking ExceptionWaste Disposal Evaluation AreaFlood PlainTransCanada Gas Line |
|--|--|---|--|
- 0 500 1,000 2,000 3,000 4,000 Meters